

Original-Betriebsanleitung

EN - Original-Instruction Manual
NL - Originele handleiding

HRS.../4, .../6
CHRS.../4, CHRS.../6



HOMA
PUMPEN MIT SYSTEM

Content

1. General Information	27
1.1. Declaration of Conformity.....	27
1.2. Preface	27
1.3. Proper use	27
1.4. Copyright	27
1.5. Warranty	27
2. Safety	29
2.1. Instructions and safety information	29
2.2 Guidelines used and CE certification	29
2.3. General safety	29
2.4. Operating personal	29
2.5. Electrical work	29
2.6. Operating procedure.....	30
2.7. Safety and control devices	30
2.8. Operation in an explosive atmosphere.....	30
2.9. Pumped fluids	30
3. General description	31
3.1. Application	31
3.2. Types of Use.....	31
3.3. Construction	31
4. Package, Transport, Storage	33
4.1. Delivery.....	33
4.2. Transport.....	33
4.3. Storage	33
4.4. Returning to the supplier	33
5. Installation and Start-Up	34
5.1. General	34
5.3. Start-Up	38
5.4. Electrical system	38
5.5. Motor protection.....	38
5.6. Operation with a static frequency converter	38
5.7. Activation types	38
6. Maintenance	39
6.1. General	39
6.2. Maintenance	39
6.3. Change of oil.....	40
7. Shutdown	41
7.1. Temporary shutdown.....	41
7.2. Final shutdown / storage	41
7.3. Restarting after an extended period of storage.....	41
8. Supplement to ex-protection implementation	41
9. Connection of pumps and mixers	47
10. Declaration of Contamination	73

1. General Information

1.1. Declaration of Conformity

EC Declaration of conformity in line with the EC Machinery Directive 2006/42/EEC, Appendix II Part 1 A

Manufacturer Name and Address:

HOMA Pumpenfabrik GmbH
Industriestraße 1
53819 Neunkirchen – Seelscheid
Germany

We hereby declare, that

HRS.../4, .../6
CHRS.../4, .../6

are conform to the following relevant requirements:

Machinery Directive 2006/42/EC

Applied harmonized standards of which have been published in the official Journal of the EC

Responsible for compiling the technical documentation:

Vassilios Petridis
Director Research and Development / Production
HOMA Pumpenfabrik GmbH

This Declaration of Conformity was issued by:

Oberheister, 23.02.2016



Vassilios Petridis
Director Research and Development / Production
HOMA Pumpenfabrik GmbH

1.2. Preface

Dear Customer,
Thank you for choosing one of our company's products. You have purchased a product which has been manufactured to the latest technical standards. Read this operating and maintenance manual carefully before you first use it. This is the only way to ensure that the product is safely and economically used.

The documentation contains all the necessary specifications for the product, allowing you to use it properly. In addition, you will also find information on how to recognize potential dangers, reduce repair costs and downtime, and increase the reliability and working life of the product.

All safety requirements and specific manufacturer's requirements must be fulfilled before the product is put into operation. This operating and maintenance manual supplements any existing national regulations on industrial safety and accident prevention. This manual must also be accessible to personnel at all times and also be made available where the product is used.

1.3. Proper use

The HOMA products comply with the valid safety regulations and meet the demands of state-of-the-art technology. In the event of improper use, there is a danger to life for the user as well as for third parties. Moreover, the product and/or attachments may be damaged or destroyed.

It is important to ensure that the product is only operated in technically perfect condition and as intended. To do so, follow the operating instructions.

1.4. Copyright

This operation and maintenance manual has been copyrighted by the manufacturer. This operation and maintenance handbook is intended for the use by assembly, operating and maintenance personnel. It contains technical specifications and diagrams which may not be reproduced or distributed, either completely or in part, or used for any other purpose without the expressed consent of the manufacturer.

1.5. Warranty

Costs for removal and installation of the complained product at the installation place, costs for the ride of the mechanics to the location and from the installation place as well as costs for transport are not components of our warranty. Hereby arose costs, especially costs for checking and transport are bearing by the sender or operator of the pump. This is also valid for an asserted warranty claim if a check results that the unit works faultless and is free of defects. All products have a high quality standard. Each product is defeated by a strict technical end control before delivery. A warranty repair achieved by us does not extend the warranty period. Replaced spare parts give no reasons for a new warranty period. Extensive claims are excluded, especially such as diminution, change or compensation also for any kind of follow up damages.

In order to ensure that your guarantee claim is processed as efficiently as possible, please contact us or the appropriate sales representative.

Once your claim for a return has been agreed, you will receive a return certificate. Please then send the rejected product, carriage prepaid, to the factory together with the return certificate, proof of purchase and an indication of the damage. Claims made on grounds of damage caused in transit must be established and confirmed on delivery of the product by the express company, the railway company or the postal service.

1.5.1. General information

This chapter contains the general information on the warranty. Contractual agreements have the highest priority and are not superseded by the information in this chapter!

The manufacturer is obliged to correct any defects found in the products it sells, provided that the following requirements have been fulfilled:

- The defects are caused by the materials used or the way the product was manufactured or designed.
- The defects were reported in writing to the manufacturer within the agreed warranty period.
- The product was used only as prescribed.
- All safety and control devices were connected and inspected by authorized personnel.

If no other provisions have been made, the warranty period applies to the first 12 months after initial start-up or to a max. of 24 months after the delivery date. Other agreements must be made in writing in the order confirmation. These agreements will remain valid at least until the agreed warranty period of the product has expired.

1.5.2. Spare parts, add-ons and conversions

Only original spare parts as supplied by the manufacturer may be used for repairs, replacements, add-ons and conversions. Only these parts guarantee a long working life and the highest level of safety. These parts have been specially designed for our products. Self-made add-ons and conversions or the use of non-original spare parts can seriously damage the product and/or injure personnel.

1.5.3. Maintenance

The prescribed maintenance and inspection work should be carried out regularly. This work may only be carried out by qualified, trained and authorized personnel. The maintenance and inspection log supplied must be properly updated. This enables you to monitor the status of inspections and maintenance work. Quick repairs not listed in this operation and maintenance manual and all types of repair work may only be performed by the manufacturer and its authorized service centres.

1.5.4. Damage to the product

Damage as well as malfunctions that endanger safety must be eliminated immediately by authorized personnel. The product should only be operated if it is in proper working order. During the agreed warranty period, the product may only be repaired by the manufacturer or an authorized service workshop! The manufacturer reserves the right to recall the damaged product to the factory for inspection!

1.5.5. Exclusion from liability

No liability will be assumed for product damage if one or more of the following points apply:

- Incorrect design and on our part due to faulty and/or incorrect information provided by the operator or customer
- Non-compliance with the safety instructions, the regulations and the requirements set forth by German law and
 - this operating and maintenance manual
- Incorrect storage and transport
- Improper assembly/dismantling
- Improper maintenance
- Unqualified repairs
- Faulty construction site and/or construction work
- Chemical, electrochemical and electrical influences
- Wear

In case of a power failure or another technical failure, by which a proper operation of the pump is no longer guaranteed, it is essential to take care that damages by an overflow of the pump sump are prevented securely, for example, by installing a mains-independent alarm or other appropriate protective measures.

This means the manufacturer's liability excludes all liability for personal, material or financial injury.

1.5.6. Manufacturer's address

HOMA Pumpenfabrik GmbH
Industriestrasse 1
D-53819 Neunkirchen-Seelscheid
Phone: +49 2247 / 7020
Fax: +49 2247 / 70244
Email: info@homa-pumpen.de
Homepage: www.homapumpen.de

2. Safety

This chapter lists all the generally applicable safety instructions and technical information. Furthermore, every other chapter contains specific safety instructions and technical information. All instructions and information must be observed and followed during the various phases of the product's lifecycle (installation, operation, maintenance, transport etc.). The operator is responsible for ensuring that personnel follow these instructions and guidelines.

2.1. Instructions and safety information

This manual uses instructions and safety information for preventing injury and damage to property. To make this clear for the personnel, the instructions and safety information are distinguished as follows:

Each safety instruction begins with one of the following signal words:

- **Danger:** Serious or fatal injuries can occur!
- **Warning:** Serious injuries can occur!
- **Caution:** Injuries can occur!
- **Caution (Instruction without symbol):** Serious damage to property can occur, including irreparable damage!

Safety instructions begin with a signal word and description of the hazard, followed by the hazard source and potential consequences, and end with information on preventing it.

2.2 Guidelines used and CE certification

Our products are subject to

- various EC directives,
- various harmonized standards,
- various national standards.

Please consult the EU Declaration of Conformity for the precise information and the guidelines and norms in effect.

Also, various national standards are also used as a basis for using, assembling and dismantling the product. These include the German accident prevention regulations, VDE regulations, German Equipment Safety Law etc. The CE symbol is found either on the type plate or next to the type plate. The type plate is attached to the motor casing.

2.3. General safety

- Never work alone when installing or removing the product.
- The machine must always be switched off before any work is performed on it (assembly, dismantling, maintenance, installation). The machine must be disconnected from the electrical system and secured against being switched on again. All rotating parts must be at a standstill.
- The operator should inform his/her superior immediately should any defects or irregularities occur.
- It is of vital importance that the system is shut down immediately by the operator if any problems arise which may endanger safety of personnel.

Problems of this kind include:

- Failure of the safety and/or control devices
- Damage to critical parts
- Damage to electric installations, cables and insulation.
- Tools and other objects should be kept in a place reserved for them so that they can be found quickly.
- Sufficient ventilation must be provided in enclosed rooms.
- When welding or working with electronic devices, ensure that there is no danger of explosion.
- Only use fastening devices which are legally defined as such and officially approved.
- The fastening devices should be suitable for the conditions of use (weather, hooking system, load, etc). If these are separated from the machine after use, they should be expressly marked as fastening devices. Otherwise they should be carefully stored.
- Mobile working equipment for lifting loads should be used in a manner that ensures the stability of the working apparatus during operation.
- When using mobile working equipment for lifting non guided loads, measures should be taken to avoid tipping and sliding etc.
- Measures should be taken that no person is ever directly beneath a suspended load. Furthermore, it is also prohibited to move suspended loads over workplaces where people are present.
- If mobile working equipment is used for lifting loads, a second person should be present to coordinate the procedure if needed (for example if the operator's field of vision is blocked).
- The load to be lifted must be transported in such a manner that nobody can be injured in the case of a power cut. Additionally, when working outdoors, such procedures must be interrupted immediately if weather conditions worsen.
- These instructions must be strictly observed. Non-observance can result in injury or serious damage to property.

2.4. Operating personal

All personnel who work on or with the product must be qualified for such work; electrical work, for example may only be carried out by a qualified electrician. The entire personnel must be of age.

Operating and maintenance personnel must also work according to local accident prevention regulations.

It must be ensured that personnel have read and understood the instructions in this operating and maintenance handbook; if necessary this manual must be ordered from the manufacturer in the required language.

2.5. Electrical work

Our electrical products are operated with alternating or industrial high-voltage current. The local regulations (e.g. VDE 0100) must be adhered to. The "Electrical connection" data sheet must be observed when connecting the product. The technical specifications must be strictly adhered to. If the machine has been switched off by a protective device, it must not be switched on again until the error has been corrected.



Beware of electrical current!
Incorrectly performed electrical work can result in fatal injury! This work may only be carried out by a qualified electrician.



Beware of damp!
Moisture penetrating cables can damage them and render them useless. Furthermore, water can penetrate into the motor and cause damage to the terminals or the winding. Never immerse cable ends in the pumped fluid or other liquids.

2.5.1. Electrical connection

When the machine is connected to the electrical control panel, especially when electronic devices such as soft startup control or frequency drives are used, the relay manufacturer's specifications must be followed in order to conform to EMC. Special separate shielding measures e.g. special cables may be necessary for the power supply and control cables. The connections may only be made if the relays meet the harmonized EU standards. Mobile radio equipment may cause malfunctions.



Beware of electromagnetic radiation! Electromagnetic radiation can pose a fatal risk for people with pacemakers. Put up appropriate signs and make sure anyone affected is aware of the danger.

2.5.2. Ground connection

Our products (machine including protective devices and operating position, auxiliary hoisting gear) must always be grounded. If there is a possibility that people can come into contact with the machine and the pumped liquid (e.g. at construction sites), the grounded connection must be additionally equipped with a fault current protection device. The electrical motors conform to motor protection class IP 68 in accordance with the valid norms.

2.6. Operating procedure

When operating the product, always follow the locally applicable laws and regulations for work safety, accident prevention and handling electrical machinery. To help to ensure safe working practice, the responsibilities of employees should be clearly set out by the owner. All personnel are responsible for ensuring that regulations are observed. Certain parts such as the rotor and propeller rotate during operation in order to pump the fluid. Certain materials can cause very sharp edges on these parts.



Beware of rotating parts! The moving parts can crush and sever limbs. Never reach into the pump unit or the moving parts during operation. Switch off the machine and let the moving parts come to a rest before maintenance or repair work!

2.7. Safety and control devices

Our products are equipped with various safety and control devices. These include, for example suction strainers, thermo sensors, sealed room monitor etc. These devices must never be dismantled or disabled. Equipment such as thermo sensors, float switches, etc. must be checked by an electrician for proper functioning before start-up (see the "Electrical Connection" data sheet).

Please remember that certain equipment requires a decoder device or relay to function properly, e.g. posistor and PT100 sensor. This decoder can be obtained from the manufacturer or a specialist electronics dealer. Personnel must be informed of the installations used and how they work.



Caution!
Never operate the machine if the safety and monitoring devices have been removed or damaged, or if they do not work.

2.8. Operation in an explosive atmosphere

Products marked as explosion-proof are suitable for operation in an explosive atmosphere. The products must meet certain guidelines for this type of use. Certain rules of conduct and guidelines must be adhered to by the operator as well. Products that have been approved for operation in an explosive atmosphere are marked as explosion-protected "Ex". In addition, an "Ex" symbol must be included on the type plate! When used in an explosive atmosphere, the additional chapter entitled "Explosion protection according to the ...standard" must be observed!

2.9. Pumped fluids

Each pumped fluid differs in regard to composition, corrosiveness, abrasiveness, TS content and many other aspects. Generally, our products can be used for many applications. For more precise details, see chapter 3, the machine data sheet and the order confirmation. It should be remembered that if the density, viscosity or the general composition change, this can also alter many parameters of the product.

When switching the product into another pumped fluid, observe the following points:

- Products which have been operated in sewage or waste water must be thoroughly cleaned with pure water or drinking water before use.
- Products which have pumped fluids which are hazardous to health must always be decontaminated before changing to a new fluid. Also clarify whether the product may be used in a different pumped fluid.
- With products which have been operated with a lubricant or cooling fluid (such as oil), this can escape into the pumped fluid if the mechanical shaft seal is defective.



Danger - explosive fluids!
It is absolutely prohibited to pump explosive liquids (e.g. gasoline, kerosene, etc.). The products are not designed for these liquids!

3. General description

3.1. Application

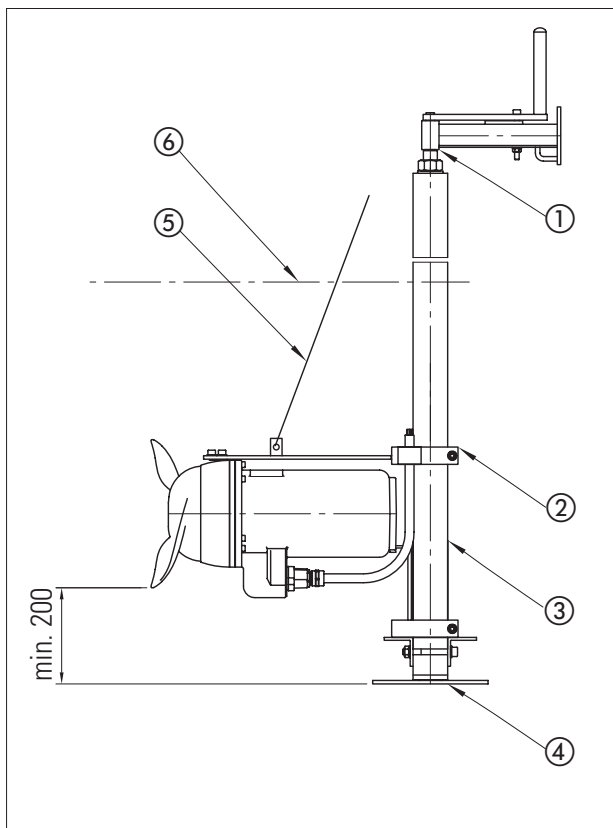
Submersible mixers are used for various applications such as mixing, homogenization and suspension of liquids with low to medium viscosity. Max. 2% solid-content in the medium!

3.2. Types of Use

The motors are designed for continuous operation (S1), maximum 15 starts per hour.

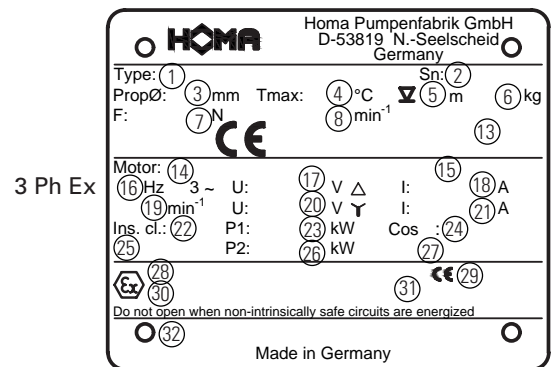
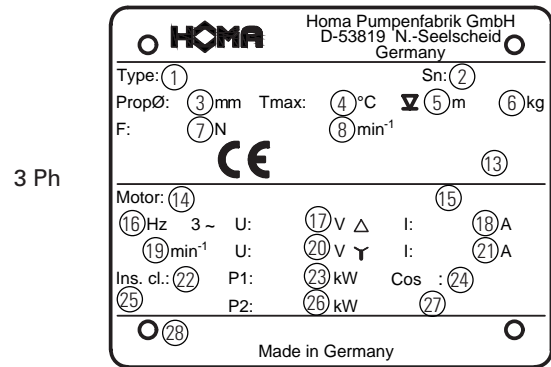
3.3. Construction

The pump consists of the motor and the pump housing as well as the propeller which belongs to it. All important parts of the pump are characterized by generous dimensioning.



No.	Description
1	top guide bar with horizontal positioner
2	motor bracket
3	square guide bar
4	guide bar base
5	lifting rope
6	cover 1xØ propeller dia. minimum 500 mm

3.3.1. Type label



No.	3 Ph	3 Ph Ex
1	Type description	Type description
2	Serial number	Serial number
3	Propeller diameter	Propeller diameter
4	Temperature of medium	Temperature of medium
5	Submersion depth	Submersion depth
6	Weight	Weight
7	Thrust	Thrust
8	Propeller speed	Propeller speed
13	Build year	Build year
14	Motor type	Motor type
15	IE Marking	IE Marking
16	Frequency	Frequency
17	Voltage - triangel	Voltage - triangel
18	Nominal current - triangel	Nominal current - triangel
19	Motor RPM	Motor RPM
20	Voltage - Star Connection	Voltage - Star Connection
21	Nominal current Star connection	Nominal current Star connection
22	Insulation class	Insulation class
23	Power P1	Power P1
24	Cos phi	Cos phi
25	Protection class	Protection class
26	Power P2	Power P2
27	Operating class	Operating class
28	Text field sales	Ex-certification number
29		Ex-test lab
30		Ex-designation
31		Ex-i-power circuit details
32		Text field sales

3.3.2. Motor

The three-phase asynchronous motor is made from sheet metal with a double-varnished winding wire as well as the motor shaft with rotor package. The power supply cable is designed for the maximum mechanical load and is sealed against water pressure from the pumped liquid. The motor cable lead connections are sealed from the pumped liquid as well. The bearings used are permanently lubricated maintenance-free antifriction bearings.

All models are available with explosion proof motors.

General motor data	
Operating mode	S1
Insulation class	F (155°C)
Degree of protection	IP68
Cable length	10 m
Shaft sealing HRS	NBR
Bearing	one grooved ball bearing (suspension side) one double-row type angular ball bearing (propeller side)

3.3.3. Control devices

The pump is equipped with various safety and control devices:

Temperature Sensors

The mixers have a set of temperature sensors built in the stator windings.

Standard models have the sensors connected to the motor power supply cable, the wire ends marked T1 and T3. They must be connected to the safety circuit of the control box in order to provide an automatic re-start of the motor, when the motor cools. Explosion proof models with motors up to 15 kW have a set of temperature sensors built-in, with a higher switch-off temperature, connected to the motor cable, the wire ends marked T1 and T2. They must be connected to a special relay in the starter box in order to provide manual pump re-start. All explosion proof models have both sets of sensors built-in, as described above, with wire ends marked T1, T2, T3. They have to be connected accordingly as described above. The temperature sensor set must be connected to the switchgear unit so that it switches off if it overheats.

Check of Direction of Rotation

After the electrical connection has been made, check that the agitator propeller is rotating in the correct direction. As seen from the motor, the propeller must rotate clockwise. If you ordered a special version with left-hand drive, the propeller must turn counter-clockwise. If the direction of rotation of the agitator propeller is incorrect, transpose two of the three conductor phases (L1, L2, L3) coming directly from the mains.



Beware of rotating propeller!

The moving propeller can crush and sever limbs. Switch off the machine and let the moving parts come to a rest before maintenance or repair work!

Seal condition sensors oil chamber

Agitator motors in the HRS.../C and CHRS.../C series are fitted as standard with monitoring of the sealing of the oil barrier chamber. Two sensors monitor the conductivity of the oil filling. The sensors are to be connected via the connecting cables with the cable-end designations S1 and S2 in the switchgear to an evaluation instrument with a galvanically isolated sensor circuit (electrode relay). If the shaft seal leaks, water enters the oil chamber and changes the resistance of the oil. Response sensitivity should be adjustable from 0-100 k Ω . The standard setting is 50 k Ω . If this is an antiexplosion design, select electrode relays with intrinsically safe circuits for sensors.

Motor cooling

They are cooled by the surrounding liquid.

3.3.5. Propeller

A self cleaning propeller from stainless steel is used.

4. Package, Transport, Storage

4.1. Delivery

On arrival, the delivered items must be inspected for damage and a check made that all parts are present. If any parts are damaged or missing, the transport company or the manufacturer must be informed on the day of delivery. Any claim made at a later date will be deemed invalid. Damage to parts must be noted on the delivery or freight documentation.

4.2. Transport

Only the appropriate and approved fastening devices, transportation means and lifting equipment may be used. These must have sufficient load bearing capacity to ensure that the product can be transported safely. If chains are used they must be secured against slipping. The personnel must be qualified for the tasks and must follow all applicable national safety regulations during the work. The product is delivered by the manufacturer/shipping agency in suitable packaging. This normally precludes the possibility of damage occurring during transport and storage. The packaging should be stored in a safe place if the location used is changed frequently.

4.3. Storage

Newly supplied products are prepared that they can be stored for 1 year. The product should be cleaned thoroughly before interim storage.

The following should be taken into consideration for storage:

- Place the product on a firm surface and secure it against falling over. Submersible mixers and auxiliary lifting devices should be stored horizontally, submersible sewage pumps and submersible motor pumps should be stored horizontally or vertically. It should be ensured that they cannot bend if stored horizontally.



Danger from falling over!

Never put down the product unsecured. If the product falls over, injury can occur!

- The product has to be stored at a place free from vibrations and agitation to avoid damage from the ball bearings.
- It is also necessary to pay attention to the storage. The device should be stored in dry rooms without temperature fluctuation.
- The product may not be stored in rooms where welding work is conducted as the resulting gases and radiation can damage the elastomer parts and coatings.
- It is responsible to take care that the corrosion coating will not be spoiled
- Any suction or pressure connections on products should be closed tightly before storage to prevent impurities.
- The power supply cables should be protected against kinking, damage and moisture.



Beware of electrical current!

Damaged power supply cables can cause fatal injury! Defective cables must be replaced by a qualified electrician immediately.



Beware of damp!

Moisture penetrating cables can damage them and render them useless. Therefore, never immerse cable ends in the pumped fluid or other liquids.

- The machine must be protected from direct sunlight, heat, dust, and frost. Heat and frost can cause considerable damage to propellers, rotors and coatings.
- The rotors or propellers must be turned at regular intervals. This prevents the bearing from locking and the film of lubricant on the mechanical shaft seal is renewed. This also prevents the gear pinions (if present on the product) from becoming fixed as they turn and also renews the lubricating film on the gear pinions (preventing rust film deposits).



Beware of sharp edges!

Sharp edges can form on rotors and propellers. There is a risk of injuries. Wear protective gloves.

- If the product has been stored for a long period of time it should be cleaned of impurities such as dust and oil deposits before start-up. Rotors and propellers should be checked for smooth running, housing coating and damage.
- After storage longer than one year the oil of motor and, if necessary the gear have to be changed. This is also necessary if the product never had run (natural deterioration of mineral oil).

Before start-up, the filling levels (oil, cooling fluid etc.) of the individual products should be checked and topped up if required. Please refer to the machine data sheet for specifications on filling. Damaged coatings should be repaired immediately. Only a coating that is completely intact fulfills the criteria for intended usage!

If these rules are observed, your product can be stored for a longer period. Please remember that elastomer parts and coatings become brittle naturally. If the product is to be stored for longer than 6 months, we recommend checking these parts and replacing them as necessary. Please consult the manufacturer.

4.4. Returning to the supplier

Products which are delivered to the plant must be clean and correctly packaged. In this context, clean means that impurities have been removed and decontaminated if it has been used with materials which are hazardous to health. The packaging must protect the product against damage. Please contact the manufacturer before returning!

5. Installation and Start-Up

5.1. General

In order to prevent damage to the mixer or serious injury during installation the following points must be observed:

- Installation work may only be carried out by qualified persons. The safety instructions must be followed at all times.
- The mixer must be inspected for damages before any installation work is carried out.
- Protect the mixer from frost.
- The operating area must be laid out for each machine. You must ensure that lifting gear can be fitted without any trouble, since this is required for assembly and removal of the machine.
- The maximum bearing capacity must be greater than the weight of the machine, add-on units and cable.
- Electric power cables must be laid out in such a way that safe operation and non-problematic assembly/dismantling are possible at all times.
- The electric power cables should be fastened properly to the pipes with cable holders or other suitable equipment. This should prevent loose hanging and damage to the electric power cables. Depending on the cable length and weight, a cable holder should be fitted every two or three meters.
- The structural components and foundations must be of sufficient stability to ensure safe and functional operation. The operator or supplier is responsible for the provision.
- Never let the unit run dry.
- Use deflector plates for the pumped fluid intake that air cannot introduce into the pumped liquid. This will lead to that the pump will run smoothly and is subjected to higher wear and tear.

5.2. Installation



Danger of falling!

Installation work for the mixer and its accessories is performed directly on the edge of the basin. Carelessness or wearing inappropriate clothing could result in a fall. There is a risk of fatal injury! Take all necessary safety precautions to prevent this.

Mixer

The mixer is delivered ready assembled. During installation of the mixer please check the following:

Propeller

The propeller must not touch the tank floor or walls in any possible installation position (min. 20 cm distance).

Motor Cable

The cable must not be stretched even when the mixer is completely lowered. The cable should be positioned with always providing large bending radius in order to prevent breaking. The connecting cable should be guided as tight as possible towards the top, so it is not caught in the flow.

Operating Voltage / Direction Control

The operating voltage of the system is to check for conformity according to type plate data.

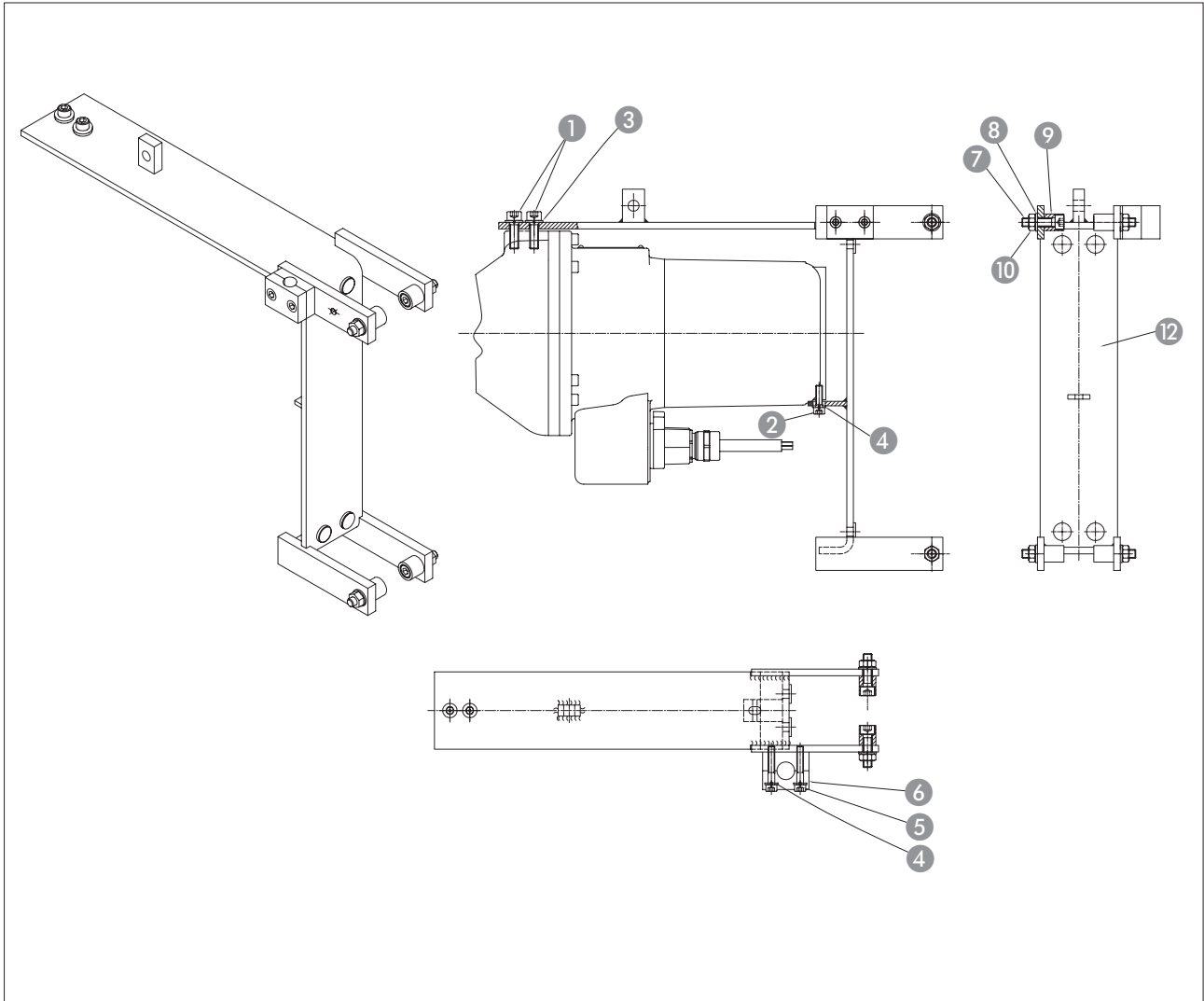
The protective cap located on the cable must be removed just before the electrical connection.

After electrical connection, the correct direction of the stirring propeller mixer must be inspected.

If the rotational direction of the stirring propeller is incorrect, two of the three conductor phases (L1, L2, L3) that are directly supplied from the mains must be interchanged.

Assembling the motor bracket to the mixer

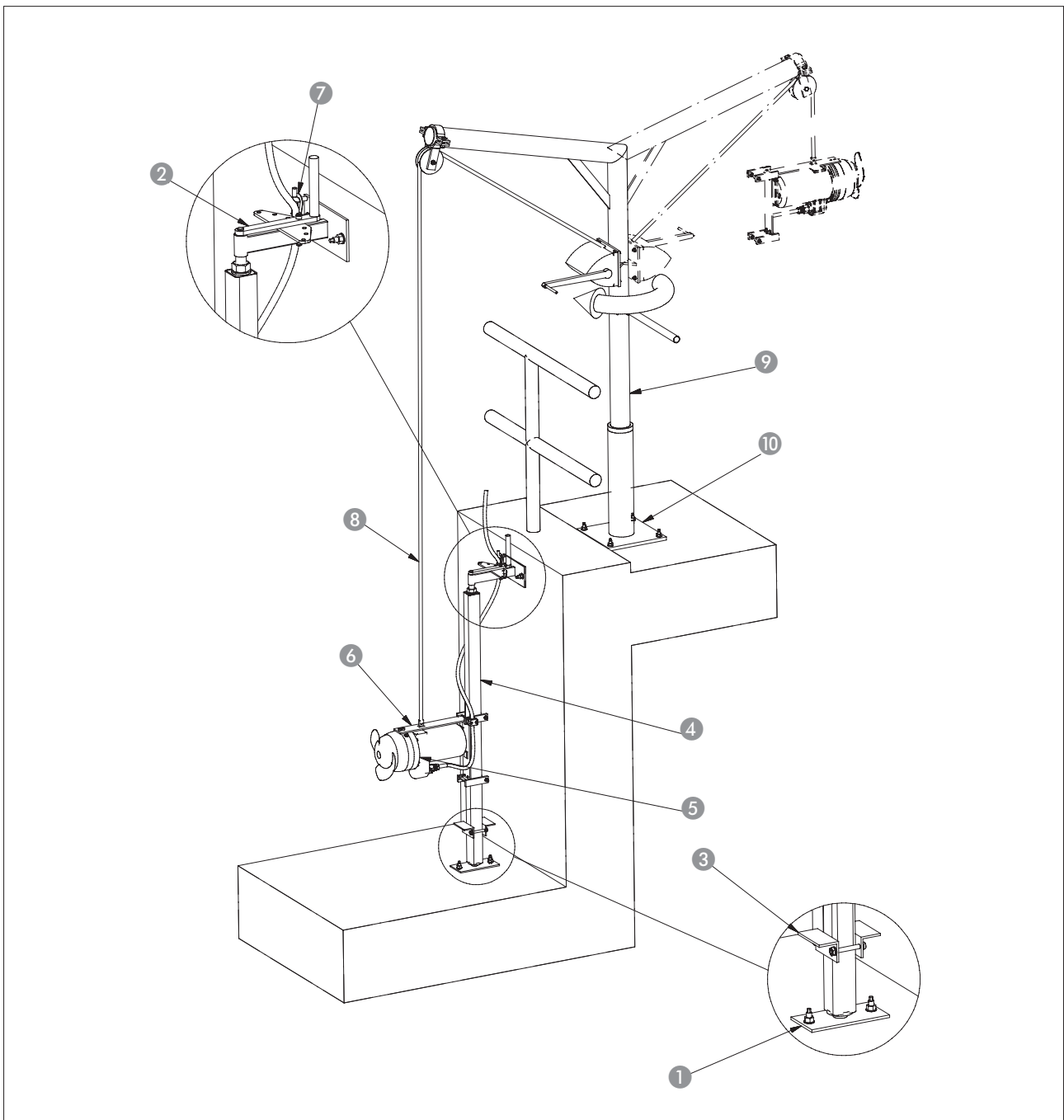
Fasten the mixer to the motor bracket (Item 12) as illustrated, using two cylinder head screws (Item 1), one cylinder head screw (Item 2) and the associated U-washers (Items 3 & 4). Additionally use a medium-strength thread locker to avoid an unintended release of the screws during operation. Lay the connecting cable between the pipe clamps (Item 6) and screw it to the motor bracket using two cylinder head screws and U-washers (Items 5 & 4). Great care should also be taken to ensure that the cable is always laid or assembled on a large radius, so that any sharp bend in the cable is prevented.



Lowering and guiding mechanisms

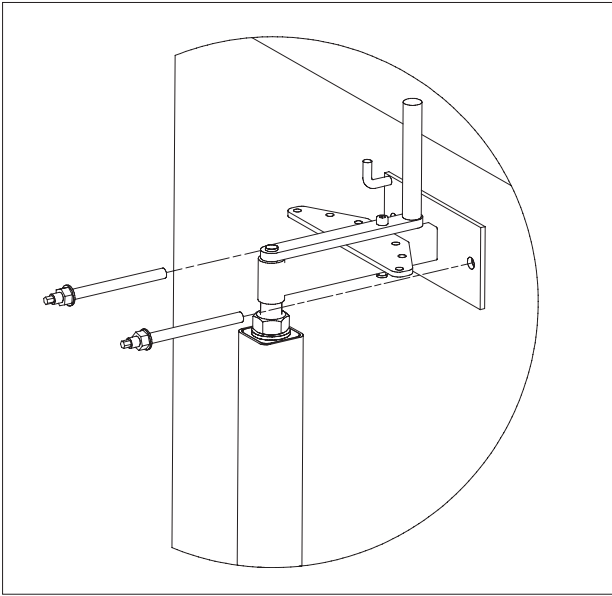
Before assembling the lowering and guiding mechanism, the local conditions governing installation (basin shape, circulation conditions etc.) must be ascertained.

It must be ensured that the mixer is freely mobile in the built-in condition and that additional fittings have no effect on flow.

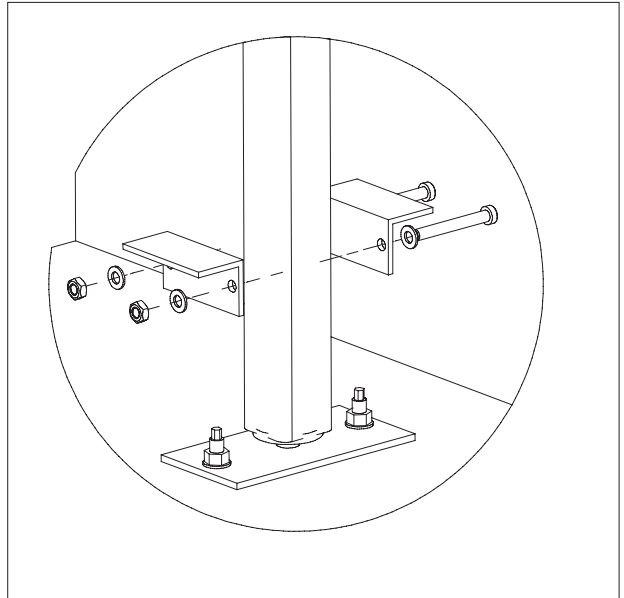


No.	Description
1	lower fastening
2	upper fastening
3	angel clamp bracket
4	square tube
5	mixer
6	motor bracket
7	cable anchor clamp
8	stainless steel wire
9	lifting gear
10	floor-mounted box column

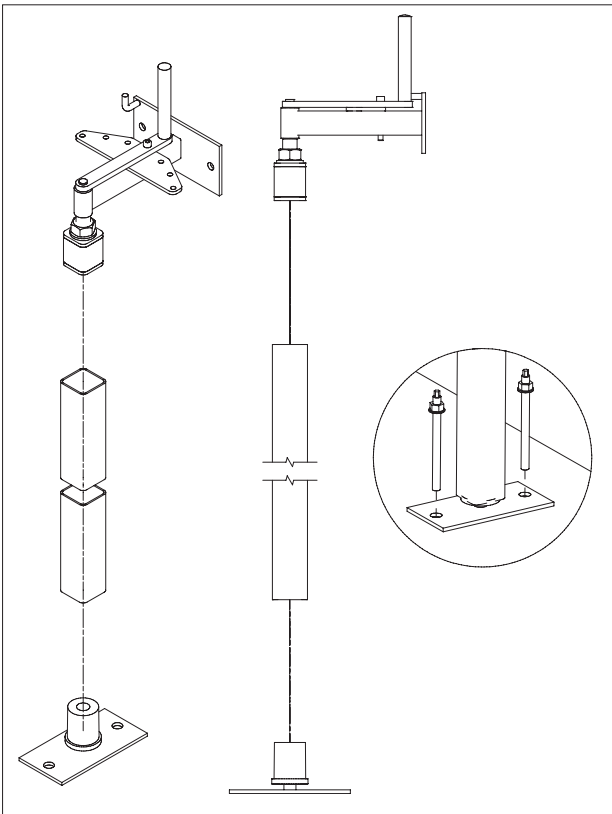
The upper fastening (Item 2) must be attached in the basin first of all. Use the supplied anchor rods and bonding anchor cartridges for this purpose.



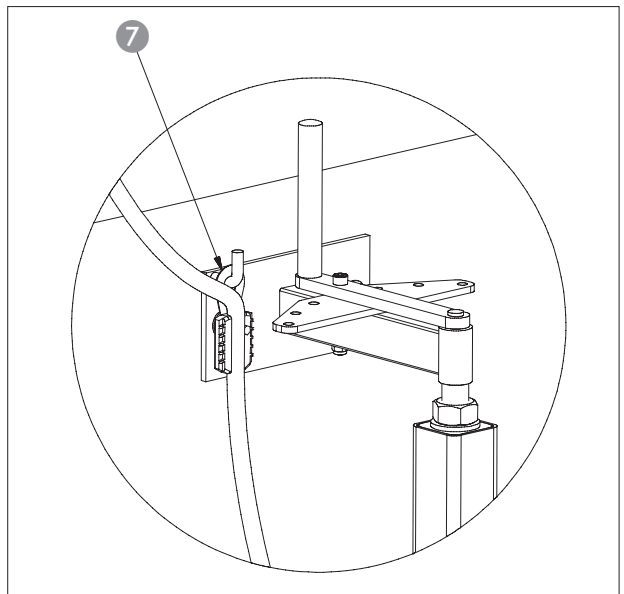
Now install the angle clamp brackets (Item 3). These represent the bearing point of the motor bracket.



In the next step, attach the square tube (Item 4, to be provided on site) to the upper and lower fastenings (Item 1). Next, hold the upper fastening on the anchor rods intended for that purpose and fasten the anchor rods with the nuts. The position of the lower fastening has now been determined. Use the supplied anchor rods and bonding anchor cartridges for fastening it.



Now lower the mixer on to the bracket in the basin. When the motor bracket lies on the angle clamp bracket, the connecting cable must be clamped in the cable anchor clamp (Pos.7). At the same time it must be ensured that the cable is led upwards as tautly as possible so that it is not caught by the delivery flow.



5.3. Start-Up



The mixer must only be started when fully submerged, in order to prevent overheating of the motor.



Any change of mixer position must only be done with mixer having been switched off and propeller not rotating.



Before start up, check again that all steps of installation procedure have been properly carried out. Make sure that the mixer is sufficiently submerged (see chapter 8+9), and that there are no solid parts in the tank which might damage the propeller. Furthermore, it must be ensured that the mixer is immersed at least half the diameter of the propeller.

Make sure that all necessary safety precautions have been carried out, e.g. to prevent persons from falling into the tank. After longer standstill of the mixer, clean the propeller and motor surface from dried remains of mixing liquid in order to prevent cooling problems.

5.4. Electrical system

Observe the relevant local and national regulations when laying out and selecting the electric lines as well as when connecting the motor. The motor must be protected by a motor protection switch. Have the motor connected in accordance with the "Wiring connection" data sheet. Pay attention to the direction of rotation. If the direction of rotation is incorrect, the machine will not perform as specified, and under certain circumstances, can become damaged. In accordance with the machine data sheet, check the operating voltage and make certain that the current consumption remains uniform during all phases. Make sure that all temperature sensors and monitoring devices, are connected and that their function is tested. For details on this, see the wiring diagram.



Beware of electrical current! Incorrectly performed electrical work can result in fatal injury. This work may only be carried out by a qualified electrician.

5.5. Motor protection

The minimum requirement is a thermal relay / motor protection switch with temperature compensation, differential triggering and an anti-reactivation device in accordance with VDE 0660 or the appropriate national regulations. If the machines are connected to electrical systems in which faults frequently occur, we recommend installing additional protective devices (overvoltage, undervoltage or phase failure relays, lightning protection). Local and national regulations must be adhered to when connecting the machine.

5.6. Operation with a static frequency converter

The following points must be observed when operating the converter:

- The pump is suitable for operation with the frequency converter according to DIN EN 60034-17.
- Voltage peaks at the motor winding must be avoided and, where appropriate, suitable filters must be provided in the motor lead.

- The proper grounding of the entire system must be ensured.
- The specifications of the frequency converter manufacturer must be observed.
- Under certain circumstances, a shielded cable is necessary to comply with EMC directives.
- The information sheet "Using HOMA pumps with the frequency converter" must be observed.

5.7. Activation types

Activation types for cables with free ends (without plugs)

Star-delta activation

If the motor protection is installed in the line:

Set the motor protection to 0.58 x the rated current. The maximum start-up time in star-delta mode is 3 seconds. If the motor protection is not installed in the line, set the motor protection to the rated current when fully loaded.

Starting transformer/soft start

Motor protection should be set to the rated current when fully loaded. At partial load, we recommend that motor protection is set 5% above the measured current at the operating point. The maximum start-up time at reduced voltage (approx. 70%) is 3 seconds.

Operation with frequency transformers

The machine can be operated on frequency transformers. Observe chapter 5.6 of this manual.

5.7.1. After Start-Up

The rated current is briefly exceeded during the start-up procedure. Once this process has ended, the operating current should no longer exceed the rated current. If the motor does not start immediately after the machine is switched on, it must be switched off immediately. The start pauses specified in the technical data must be adhered to before starting up again. If the fault recurs, the machine must be switched off again immediately. The machine may only be started again once the fault has been rectified.

The following items should be monitored:

- Operating voltage (permissible deviation +/- 5% of the rated voltage)
- Frequency (permissible deviation -2% of the rated frequency)
- Current consumption (permissible deviation between phases is a maximum of 5%)
- Voltage difference between the individual phases (max. 1%)
- Starts and stops per hour (see technical data)
- Minimum water immersion level, level control unit, dry-run protection
- Smooth running
- Check for leaks, if need be, follow the necessary steps as set out in "Maintenance"

6. Maintenance

6.1. General

The machine and the entire system must be inspected and maintained at regular intervals. The time limit for maintenance is set by the manufacturer and applies to the general conditions of use. The manufacturer should be consulted if the system is to be used with corrosive and/or abrasive pumped liquids, as the time limit between inspections may need to be reduced.

Note the following information:

- The operating and maintenance manual must be available to the maintenance personnel and its instructions followed. Only the repair and maintenance measures listed here may be performed.
- All maintenance, inspection and cleaning work on the machine and the system may only be carried out by trained specialists exercising extreme care in a safe workplace. Proper protective clothing is to be worn. The machine must be disconnected from the electricity supply before any work is carried out. There must be no way that it can be inadvertently switched on. Additionally, the appropriate protective measures as defined by the BGV/GNV should be enforced when working in basins and/or containers.
- Above a weight of 50kg, only hoisting gear which has been officially approved and which is in a technically perfect condition should be used for lowering and raising the machine.

Make sure that all fastening devices, ropes and safety devices of the hand winch are in a technically perfect condition. Work may only commence if the auxiliary hoisting gear has been checked and found to be in perfect working order. If it is not inspected, danger to personnel may result!

- Wiring work on the machine and system must be carried out by an electrician. For machines approved for work in areas subject to explosion danger, please refer to the "Explosion protection in accordance with the regulation" chapter.
- When working with inflammable solvents and cleaning agents, fires, unshielded lighting and smoking are prohibited.
- Machines which circulate fluids hazardous to health, or which come into contact with them, must be decontaminated. It must be ensured that no dangerous gases can form or are present.
- Ensure that all necessary tools and materials are available. Tidiness and cleanliness guarantee safe and problem-free operation of the machine. After working on the machine all cleaning materials and tools should be removed from it. All materials and tools should be stored in an appropriate place.
- Operating supplies such as oil and lubricants must be collected in appropriate vessels and properly disposed of (in accordance with the 75/439/EEC directive and with §§5a, 5b AbfG). Appropriate protective clothing is to be worn for cleaning and maintenance jobs. This is to be disposed of in accordance with waste code TA 524 02 and EC Directive 91/689/EEC. Only lubricants expressly recommended by the

manufacturer may be used. Oils and lubricants should not be mixed. Only use genuine parts made by the manufacturer.

A trial run or functional test of the machine must be performed as instructed in the general operating conditions.



Before maintenance or repair disconnect the mixer from the power supply to prevent accidental starting of the mixer!



In accordance with the product liability law we point out that we shall not be liable for damages caused by our product due to unauthorized repair by persons other than the manufacturer or an authorized workshop or due to the use of spare parts other than original HOMA parts. The same product liability limitations are valid for accessories.



Before maintenance or repair make sure that all rotating parts stand still!



Before carrying out maintenance and service, the mixer must be thoroughly flushed with clean water.



When loosening of the oil chamber control screw, overpressure can escape. Release the screw only when pressure balance is secured.



If not otherwise stated, the torque values of the below tables should be used.

Values stated are for clean, lubricated screws.

Fixing torque [Nm] for screws A2/A4 (Coefficient of friction = 0,2)

	A2/A4, Hardness class 70	A2/A4, Hardness class 80
	DIN912/DIN933	DIN912/DIN933
M6	7 Nm	11,8 Nm
M8	17 Nm	28,7 Nm
M10	33 Nm	58 Nm
M12	57 Nm	100 Nm
M16	140 Nm	245 Nm
M20	273 Nm	494 Nm

6.2. Maintenance

It is imperative to keep a maintenance list to be always informed about the submersible mixer. This list must be presented to the trade association, the technical inspection agencies and the manufacturer of the system or of the mixer when requested.

The full warranty requires the annual inspection of the mixer by the manufacturer of the system or of the mixer.

6.2.1. General (monthly or every 500 operating hours)

Keep the agitator clean (otherwise cooling is impaired). Foreign bodies that have been picked up must be removed from the agitator. The connection cable must be examined for abrasions, traction marks, buckling and other damage. If the cable is defective there is a danger that the agitating medium may enter the agitator and cause damage. A defective cable must be immediately replaced by the manufacturer or an authorized workshop. The agitator must be checked for damage to the corrosion protection coating and for leaks.

6.2.2. Electric motor

The power consumption should be checked on a monthly basis in all 3 phases. Damage to the motor, transmission and storage can be recognized by the current consumption.

Lubrication: The roller bearings are lubricated for their lifespan (in case of noise, the bearings must be replaced at the manufacturer's factory). The oil in the oil chamber should be changed after each 6000 operating hours.

Oil condition: Lay the agitator horizontally, so that one of the oil chamber screws is on top. Remove the screw and remove a small amount of oil. If the oil is cloudy or milky, this indicates a defective shaft seal. In this case, have the condition of the shaft seals checked by a HOMA dealer or the customer service department. Replace missing parts.

Insulation test: If the insulation resistance is less than 2 megaohms, the submersible mixer can not be turned on. (Measuring DC voltage 1500 V)

6.2.3. Stirring Propeller

Inspection: Inspect the stirring propeller periodically. Remove random wound foreign bodies such as twines, cords, etc. They can cause uneven running and thus create strong vibrations in the system and can lead to damage on the mixer components. With uneven running, the stirring propeller must be cleaned.

6.3. Change of oil



Change oil only with motor at operation temperature. Note that the mixer must be in a horizontal position when changing oil.

When releasing the oil level screws, excess pressure may escape from the oil chamber or the gearbox. Only remove the screws completely after the pressure was equalized. The thread and the magnets (on the gearbox) of the screws must be clean before screwing them back on. The sealing rings must be always replaced with new parts.

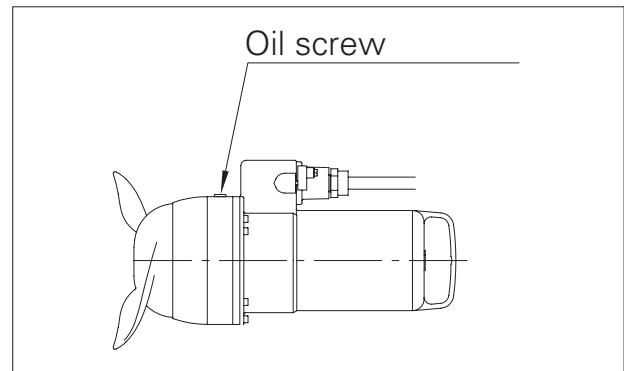
6.3.1 Oil chamber

Oil: biodegradable Shell Ondina 917. Used oil must be disposed of properly. The oil capacity is:

HRS07 - 27	0.7 l
HRS29 - 32	1.0 l
CHRS07 - 25	0.8 l
CHRS27- 32	1.1 l

Procedure:

1. Loosen the oil drain plug
2. Drain oil
3. Fill prescribed type and quantity of oil
4. Screw in the oil drain plug



7. Shutdown

7.1. Temporary shutdown

For this type of shutdown, the machine remains installed and is not cut off from the electricity supply. For temporary shutdown, the machine must remain completely submerged so that it is protected from frost and ice. Make sure the operating room and the pumped fluid cannot be covered by ice. This ensures that the machine is always ready for operation. During longer shutdown periods, carry out a regular (monthly to quarterly) function run for a period of 5 minutes.



Caution!
Only carry out a function run under the proper conditions of operation and use. Never run the machine dry. This can result in irreparable damage!

7.2. Final shutdown / storage

Switch off the system, disconnect the machine from the electricity supply and dismantle and store it. Note the following information concerning storage:



Beware of hot parts!
When removing the machine, be careful of the temperature of the housing components. These can heat up to well above 40°C. Let the machine cool down to ambient temperature before you touch it.

- Clean the machine.
- Store it in a clean, dry place, protect the machine against frost.
- Place it down vertically onto a firm foundation and secure it against falling.
- Seal the intake and discharge ports of pumps with suitable material (such as foil).
- Support the electric connecting lead on the cable lead-in to help avoid a permanent deformation.
- Protect the ends of the electric power cable from moisture.
- Protect the machine from direct sunshine as a preventive measure against brittleness in elastomer parts and the propeller and casing coating.
- When storing the machine in a garage please remember: Radiation and gases which occur during electric welding destroy the elastomers of the seals.
- During lengthy periods of storage, regularly (for example every six months) turn the impeller or propeller by hand. This prevents indentations in the bearings and stops the rotor from rusting up.

7.3. Restarting after an extended period of storage

Before restarting the machine, clean it of dust and oil deposits. Then carry out the necessary maintenance actions (see "Maintenance"). Check that the mechanical shaft seal is in good order and working properly. Once this work has been completed, the machine can be installed (see "Installation") and connected to the electricity supply by a specialist. See "Start-up" for instructions on restarting.

Only restart the machine if it is in perfect condition and ready for operation.

8. Supplement to ex-protection implementation

8.0. Declaration of Conformity

Manufacturer: HOMA Pumpenfabrik GmbH
Industriestraße 1
D-53819 Neunkirchen-Seelscheid

For pump series:

H	CH	CTP	TP	GRP	ETM
MX(S)	V	VX	K	KX	KSX

Including Motor types:

Submersible motor type	Product-marking	Product-marking including Intrinsic safety
(C)AM 120	Ex II 2 G Ex c d IIB T4 (T3)	-
(C)AM 122	Ex II 2 G Ex c d IIB T4 (T3)	-
(C)AM 136	Ex II 2 G Ex c d IIB T4 (T3)	-
(C)AM 173	Ex II 2 G Ex c d IIB T4 (T3)	-
AM 204	Ex II 2 G Ex c d e IIB T4 (T3)	Ex II 2 G Ex c d e ib IIB T4 (T3)
AM 210	-	Ex II 2 G Ex c d ib IIB T4 (T3)
AM 243	Ex II 2 G Ex c d e IIB T4 (T3)	Ex II 2 G Ex c d e ib IIB T4 (T3)
AM 303	Ex II 2 G Ex c d e IIB T4 (T3)	Ex II 2 G Ex c d e ib IIB T4 (T3)
AM 376	Ex II 2 G Ex c d e IIB T4 (T3)	Ex II 2 G Ex c d e ib IIB T4 (T3)
AM 421	-	Ex II 2 G Ex c d e ib IIB T4 (T3)

Applied Directive: 2014/34/EU

Applied harmonized standards:

EN 60079-0:2012	EN 1127-1:2011
EN 60079-1:2014	EN 13463-1:2009
EN 60079-7:2007	EN 13463-5:2011
EN 60079-11:2012	

EC Type-Examination by:

DEKRA Certification B.V. NL; label 0344
TÜV Rheinland Industrieservice GmbH; label 0035

We declare as manufacturer:

Products labelled accordingly meet the requirements of the listed directive and standards. This declaration loses its validity in case of any product modifications that are not approved by HOMA Pumpenfabrik GmbH.

Vassilios Petridis
Manager development and production

8.1. General information

Application validity

The validity of these operating instructions apply exclusively to HOMA explosion protected submersible motor pumps. The general operating instructions are to be observed together with these operating instructions.

Area of application

The information in these additional operating instructions apply only for HOMA equipment that are used in potentially explosive zones.



Caution! Non-adherence to the instructions can lead to explosions!

8.2. Intended use according to RL94/9/EG

Definition of terminology

Explosion-protected submersible motor pumps are primarily intended for waste waters with slimes, solids, fibers, feces as well as soiled waters of all types. The atmospheres of the areas where the units are used may be explosive due to the local operational circumstances.

Conditions for use



Caution! The intended use of the explosion-protected submersible motor pumps always assumes a cover of fluids of the pump hydraulics in order to ensure a primary explosion protection of the mechanical part in normal operation!



Caution! The machines must never be run in idle. This must be ensured by a level control as described in 4.3.



Caution! The machines must only be operated in the power range between the input power P1max and P1min in order to effectively prevent a critical temperature at the outside motor surface. For data of the power limits see Appendix Table 1, electrical data or the information in the respective type examination certificate. Due to its model testing design, the electrical part (submersible motor) may be used in potentially explosive regions of the zones 1 and 2. HOMA ex-protected submersible motors model AM satisfy the requirements for electrical equipment for potentially explosive areas according to DIRECTIVE 94/9/EG OF THE EUROPEAN COUNCIL OF MARCH 23, 2014 for intended use in potentially explosive areas of the:

Equipment group II Category 2 application conditions for Zones 1 and 2.

Devices in this category are only intended for use in areas in which it can be expected that an explosive atmosphere of gases, condensates, mists or dust/air mixture could occasionally occur. The following standards are decisive for ex-relevant implementation for ex-protected submersible motors for the electrical and mechanical part.

EN 60079-0:2006	„General determinations“
EN 60079-1:2007	Flameproof enclosures „d“
EN 60079-7:2007	Enhanced security „e“
EN 60079-11:2007	Intrinsic safety „i“
EN 1127-1:2007	Potentially explosive atmospheres - explosion protection Part 1 - Fundamentals and methods
EN 13463-1:2009	Part 1:Non-electrical equipment for use in potentially explosive areas Fundamentals and requirements.
EN 13463-5:2003	Protection by constructional safety „c“

Definition of the ignition protection type

The design direction for ex protection of the HOMA-produced explosion-protected equipment is achieved by means of

Ignition protection type: pressure-tight enclosure „d“.

In this, the parts that can ignite a potentially explosive atmosphere are arranged in a housing that, in the explosion of a potentially explosive mixture inside it, withstands the pressure and thus prevents a transfer of the explosion to the potentially explosive atmosphere surrounding the housing. Equipments that possesses a separate connection chamber, additionally satisfy the requirements of the ignition protection type. Enhanced security „e“.

In the case that instrument lines are fed for connection from simple electrical equipment corresponding to EN 60079-11 PARA. 5.4 through the pressure-tight enclosed chamber (conductance measurement, float switch as leak monitoring, etc.), then these satisfy the requirements of ignition protection type. Intrinsic safety „i“. The ignition type of safety „c“ is applied in order to adhere to the device protection in explosive- endangered areas for non-electrical equipment (mechanical ex-protection). For this purpose it is possible to make use of structural measures, which, by means of sufficient dimensions of the components, provide protection against possible ignition by moving parts, generated heated surfaces, sparks and adiabatic compression.

Certification

The EU type examination certificates for explosion-protected submersible motor pumps are issued by the DEKRA CERTIFICATION B.V. in Arnheim / NL.

DEKRA . . . ATEX

(certificates before 2011)

KEMA . . . ATEX

(see rating plate)

Together with the notification on the recognition of the quality assured production and the conformity declaration according to EN 45014 of the manufacturer, it is permitted, according to Directive 94/9/EG that explosion-protected equipment is taken into goods traffic or operation. Labeling of explosion-protected submersible motor pumps (see conformity certificate Page 2)

8.3. Safety information

General information



Caution! Interventions into explosive-protected equipment may only be carried out by officially „qualified persons“ or workshops or persons authorized by us. Any works, installation, repairs and servicing and monitoring must be carried out with observing to these operating instructions and the associated documentation!

Safety during servicing



Caution! Before servicing or repair is carried out in explosive-protected electrical equipment, it is to be separated from the grid and to be secured against inadvertent switching-on. If the motor is situated in a potentially explosive atmosphere, then it is to be removed from the ex area before opening. The pump shaft must be sufficiently vented via the exhaust system before disconnecting and pulling out of a submersible motor pump from the coupling automatic for the purpose of revision work on explosion-protected submersible pump installations!

Safety for electrical connections



Caution! The electrical connection of the equipment to the plant controls may only be carried out using the wiring diagram provided. Independent handling leads to danger of health and life and generally invalidates the guarantee. Every explosion-protected submersible motor is equipped with bi-metallic thermal switch or thermal elements (PTC thermistor) as a temperature limiter. These must be switched according to the original switching plan such that an automatic restart lock becomes effective when the critical temperature has been reached. After successful switch-off or removal of damage, the explosion-protected submersible motor must be manually reconnected to the grid.

8.4. Conditions from the EU type examination certificate

Description of the motor cooling systems

Submersible motor pumps with submersible motor AM/...EX consisting of a hydraulic pump part coupled via a common motor shaft to a 3-phase motor. The motor is equipped with a permanently fixed power cable.

The submersible motor series AM/...EX are cooled by means of the pumping medium and are suited for continuous operation S1 with fully covered motor for pumping raw waste water with slime and solids.

The submersible motor series AM/...LEX are cooled by means of a closed cooling system and are thus suited for continuous operation S1 with not-covered motor for pumping raw waste water with slime and solids.

The submersible motor series AM/...UEX are cooled by a by-pass part-flow of the pumping medium and are thus suited for continuous operation S1 with not-covered motor for pumping the raw waste water without sedimenting slime or solids.

Determination

The operating instructions of the manufacturer must be followed in order to ensure proper and safe operation of the equipment. In addition, due care must be taken of the local installation guidelines!

The submersible motors are equipped with temperature limiters in the stator windings for direct motor control. The level of the limiting temperature can be obtained from Table 1 in the Appendix! The submersible motor pumps can be optionally equipped with detector electrodes and internal level off-switches.



Caution! The AM303/AM376/AM421 and AM500 model sizes are generally equipped with the abovementioned monitoring systems. Both the detector electrodes as well as the magnetic float switches are tested as intrinsically ex-safe (Ex ib) „Simple electrical equipment“ according to EN 60079-11 Chap 5.4 and are to be taken into operation with the corresponding connection measures as described below. (test report IECEx Test Report No.NI/KEM/ExTR10.0039/01)

Environmental temperature -20°C to +40°C
Max. Pumping medium temperature +40°C



Caution! For submersible motors that are operated using frequency regulation, the temperature classification is T3! The frequency shown on the rating plate must not be exceeded in the conversion operation.

Installation information



Caution! The following measures will achieve a safety level of SIL2, as ignition monitoring measure for prevention of the coming into effect of a potential source of ignition, for normal operation of the equipment for the equipment group II and Category II. (applies only for units with AM303; AM376; AM421 motors) THE OPERATOR OF THE PLANT must obtain for the adherence to the ignition protection an own independent installation consisting of a combination of an electro-mechanical actuating system (level regulation) in order to guarantee the required minimum coverage of the pump hydraulics of at least 0.2 m. The level safety system must verify a safety integrity level SIL2!

Before first start-up of the equipment, the level regulation is to be tested as a safety system SIL2 and approved for function and accuracy according to the setting parameters. The control of the plant is to be arranged such that an automatic repeat switching-on lock after a switch-off of the equipment via the level regulation, automatically sets the automatic switching-on of the plant out of action. Only after successful finding and repairing the error may the plant be manually put into operation again.

The optical and acoustic warning messages of the level regulation must be designed according to ergonomic principles and provided unmistakable and clear information to the operator so that the necessary measures for avoiding potential sources of ignition can be initiated with a high degree of safety.



Caution! The function and effectiveness of the leveling adjustment must be monitored at regular intervals. A complete inspection must be carried out at last every 3 months!

The submersible motor series AM/...EX are cooled by means of the pumping medium and are suited for continuous operation S1 with fully covered motor. The motor part must be fully submerged in order to prevent the surface temperature rising above the temperature classification stated on the rating plate. However, with tight pump shafts, a time of max 10 min can elapse until a level of 0.2 m over the pump part is emptied.

The submersible motor series AM/...UEX is cooled by means of a by-pass part flow of the pumping medium. Here, too, the pump part must be fully submerged in order that the surface temperature does not rise above the temperature classification stated on the rating plate. The connection of free ends of the power cable may only be carried out inside the potentially explosive areas by means of suitable ex-tested and certified terminal boxes. No certified terminal boxes need be used outside of potentially explosive areas. A connection with minimum 4 mm² must be installed to the submersible motor pumps for the potential equalization according to EN 60079-14. The cable is connected to this by means of lugs and screw security of the connection must not be self-loosening. All existing thermal, level and detector sensors must connected according to the instructions of this manual and the accompanying circuit diagram.

Special conditions for safe operation

For the converter operation it is necessary to have an arrangement for direct temperature monitoring. This consists of a PT thermistor built into the coil according to DIN 44 082 with switching temperature according to Table 1 and a function-tested triggering device according to RL 94/9/EG. The switching is to be designed such that when reaching the limiting temperature, the submersible motor is switched off and a renewed start-up of the submersible motor is only possible manually! When checking the gaps of the pressure-tight enclosed motor, it is absolutely necessary to contact the manufacturer of the submersible motor in order to obtain the gap dimensions. **The gap of the tested submersible motor is less than that prescribed by the standards.**

The fastening bolts of the motor are special bolts of stainless steel type A2-70.

8.5 Installation and start-up of explosion-protected submersible motors

General information



Caution! Before starting any activity at the site of the equipment, it is important to obtain knowledge on the status of the danger of explosion from the user. The danger potential can be estimated on the basis of official zone allocation or an existing explosion protection document. Possibly a comparison should be made between the ex-ignition type of the equipment and the given requirements. In the case of enclosed spaces of shafts, sufficient ventilation must be ensured before starting work in order to thus prevent the existence of explosive gases.

HOMA explosion-protected equipment must only be used in areas (potentially explosive atmospheres) which are applicable for their declared equipment group II and category 2G, as well as maximum surface temperature of 135°C for temperature classification T4 (for frequency converters operation 200°C for temperature classification T3) in accordance with IEC 60079-0 for gases and explosion groups A and B.

Installation information for the electrical part



Caution! It is absolutely necessary that, in addition to this instruction manual, attention is also paid to the information in the EU type examination certificate in the Appendix as is mentioned here again.

8.5.1. Electrical connection

The connection of the power cables may only be carried out inside the potentially explosive areas by means of suitable ex-tested and certified terminal boxes.

8.5.2. Monitoring arrangements

Additional and monitoring arrangements with suitable verification and explosion protection labeling are to be selected according to the conditions at site. Monitoring units must satisfy the requirements of the ATEX 100a, Appendix II, Sections 1.5.5 and EN 1127-1 (potentially explosive atmospheres - Explosion protection - Part 1: Fundamentals and methods).

In the case that in the explosion-protected submersible motor pumps electrical monitoring sensors are installed outside the enclosed chamber, then their control circuits must be carried out inside the motor by the manufacturer in the ignition protection type intrinsic safety „i“ according to EN 60079-11:2007.

A potential equalization is installed in the whole intrinsically safe circuits. A further grounding of the ex-intrinsically safe circuits is not permissible. The use of this equipment may only be carried out in the ex-area of the device group II category 2 when certified ex-intrinsically safe electrode relays are used and an intrinsically safe circuit of the ignition protection type EX [ib] with the following values has been used:

- $U_i = 28 \text{ V max}$
- $I_i = 300 \text{ mA max}$
- $P_i = 1.3 \text{ W max}$

The effective internal inductivity L_i and the capacity C_i are negligibly small. In automatic operation with float switches, these must be installed according to VDE 0165 as intrinsically safe circuits in the ignition protection type intrinsically safe „i“ and connected to an ex-intrinsically safe transistor relay. From motor sizes AM303 there is built in as standard and in accordance with previously described protective measures, each a conductivity probe and a magnetic buoyancy floating switch (only for vertical operation) in the oil bearings. A temperature excess above 130°C (T4) at the seals as well as at the housing surface is safeguarded according to the measures mentions in Section 4.3!



Caution! In ex intrinsically safe circuits the instrument lines are marked in blue.

8.5.3. Operating off the grid

It is also absolutely necessary that for operating off the grid to install with thermally delayed excess power triggers also temperature limiters with the strand designations T1 and T2 to the controls in accordance with the connection diagram!

8.5.4. Frequency converter operation

For frequency converter operation it is absolutely necessary to install an arrangement for direct temperature monitoring. This consists of a PT thermistor built into the coil according to DIN 44 082 and a function-tested triggering device according to RL 94/9/EG.

The excess power protection arrangement is to be seen here as additional monitoring. The power limitation of the converter is set at the highest to 3 x the motor current.

8.5.5. Potential equalization

It is possible for equalization flows (stray or leakage currents) to flow intermittently or continuously in electrically conducting plants or components. For this purpose it is necessary to install a potential equalization in accordance with EN 60079-14. On the ex-protected HOMA submersible motors there are installed an outer connection of min 4 mm² to max. 6 mm² for creating a potential

equalization. Further application information for this is to be taken from the applicable country explosion protection ordinances.

Installation information for the mechanical part



Caution! The fluid cover of the pump hydraulic must be monitored by a leveling control!

8.5.6. Danger due to spark generation

Mechanically generated sparks can ignite flammable gases and condensates. According to EN 1127-1 Para. 6.4.4, sparks must also be excluded for category 2 in normal operation. In normal operation no spark generation is possible due to fluid covering (medium covering of the pump hydraulic). The ingress or suction of foreign bodies (stones, pieces of metal, etc) through the suction nozzles into the pump hydraulic is not possible in an expected case of malfunction in which the enclosure fails as the pump cannot suck up pumping medium nor its containing solids. In the ventilated shaft, the explosion-protected submersible motor pumps are drained via a drain system with two guide tubes of galvanized steel, between their guide claws of grey cast iron that guide it into the automatic coupling arrangement. The guide velocity, with max 0.1 m/s (10 cm/s) is so low that no sparks can be generated even in the most disadvantaged conditions. In the first installation, the guide claws of the drain arrangement should be lubricated with ball bearing grease in order to suppress heat and spark generation in the most disadvantaged case.

8.5.7. Danger due to hot surfaces

Hot surfaces can only occur in the case of an expected malfunction. Here an operational heating to a maximum of 70% of the temperature classification limit T4 (135°C) can be expected. However. If, in the case of a malfunction, the temperature limit is reached, then the temperature monitoring of the electric motor, which is connected with the mechanical part (pump) by means of a common shaft will force the whole unit to be separated from the grid.



Caution! As a preventive measure for the occurrence of temperatures at the mechanical part of the submersible motor above the temperature classification T4, a level safety system with a safety-integrity level SIL2 is to be installed and checked. (see Chap. 4). The safety system is to be programmed and switched such that an operation of the unit is only permitted with a prescribed medium cover of the pump hydraulic of a minimum of 0.2 m.

8.5.8. Danger due to static charge

Under certain circumstances, electrostatic charge can release flammable discharges. The HOMA explosion-protected submersible pumps contain no rechargeable insulated conducting components such as plastics. In addition, there is an external connection for generating the potential equalization which must be installed by the user. If further components or elements installed in the ex-zone, then the user is required as the most important measure according to EN1127-1 Para 6.4.7, to undertake the linking and grounding of all conducting parts and substances.

8.6. Start-up

If all the required and previously described installations, safety and process instructions are carried out, then the pump system must be taken into operation by an electrical technician and tested as follows:



Caution! In order to ensure that the pump system actually works as described in Para 2.2.3 of the application conditions, a measurement of the power consumption (KW) is to be carried out and checked with the information in the table in Appendix 1. As the pump first pumps into an empty pipe system, a higher power consumption will be set at the start of the pumping, depending on the height and length. Let the pump continue until a final and stable power consumption is set.

If the power consumption is within the given power limits of the motor then the explosion-protected submersible motor pump can be finally taken into service. If it is then seen that the power consumption is outside of the given power limits of the motor, then the explosion-protected submersible motor pump must not be taken into service. In this case the pipe characteristic of the installed pressure pipe is to be calculated and determined. The actual operating point of the plant can be determined with the use of the in-house HOMA HOPSEL pump design program. For safe and ex-conformity start-up contact an employee of the HOMA Company!

8.7. Repair, servicing and interventions into explosion-protected submersible motors

For repairs or interventions, first observe the safety determinations, especially those relevant for ex-protective aspects as described above.

Who is permitted to repair ex-equipment?



Caution! Repair measures must only be carried out by the works customer service or persons delegated by us or workshops with an officially recognized „Authorized person“

Gap dimensions



Caution! In the case of external repairs it is necessary to obtain information on the model type approval and the particular conditions, e.g. gap dimensions. Gap surfaces must not be worked on!

Servicing intervals of ball bearings



Caution! Besides the operating instructions for servicing intervals for non-explosion-protected submersible motor pumps, the ball bearings must be replaced at the latest after 25,000 hours. Depending on the type of operation of the submersible motor pumps, this time can be achieved in approximately 4 years.

Spare parts



Caution! In the purchasing of spare parts use only the original spares mentioned in the appended parts list. Especially the seals and cables are created in part from temperature and aging-resistant materials.

Cable connection after repair



Caution! The cables are to be connected according to the wiring diagram for the explosion-protected submersible motor pumps to the ex-terminal board or to the flameproof conductor bushing.

8.8. Technical data

For details see the general operating instructions with data sheets. The data in the original type plate placed on the machine should be entered in the adjoining depiction of the type plate in order thus to be available for any queries.

9. Connection of pumps and mixers



Danger from electric current!

Incorrect working with electric current brings danger to life! All pumps with bare cable ends must be connected by a skilled electrician.

9.1 Power cables

Pumps in Star 3-phase version

Cable identification Motor	Terminal in control cabinet
U1	U1
V1	V1
W1	W1
U2	U2
V2	V2
W2	W2

Pumps in Direct start version

Cable identification Motor	Terminal in control cabinet
U	U1
V	V1
W	W1

9.2 Control cables

Depending on the design of the pump/agitator, it may be that no separate control cable is used. In this case monitoring devices are run from the power cable.

Cable identification Motor	Monitoring system
Monitoring in winding	
T1 / T2	Temperature limiter (2 switches in series)
T1 / T4	Temperature controller (2 switches in series)
T1 / T2 / T3	Temperature limiter and controller
K1 / K2	PTC – Thermistor (3 thermistors in series)
PT1 / PT2	3 x PT100 individually installed
PT3 / PT4	
PT6 / PT6	
Bearings monitoring	
P1 / P2	PT100 upper bearing
P3 / P4	PT100 lower bearing
Seal monitoring	
S1 / S2	Seal monitoring in oil chamber
S3 / S4	Seal monitoring in connection compartment
S5 / S6	Seal monitoring in Motor compartment with 2 Electrodes
S7 / S8	Seal monitoring in Motor compartment with float switch
S9 / S10	Seal monitoring in Gearbox (Agitator)
S11 / S12	Seal monitoring in Leakage compartment (internal cooling)
Heating	
H1 / H2	Heating system



HOMA Pumpenfabrik GmbH

Industriestraße 1 ➤ 53819 Neunkirchen-Seelscheid

Telefon: +49(0)2247/702-0 ➤ Fax: +49(0)2247/702-44

e-Mail: info@homa-pumpen.de ➤ Internet: www.homa-pumpen.de

