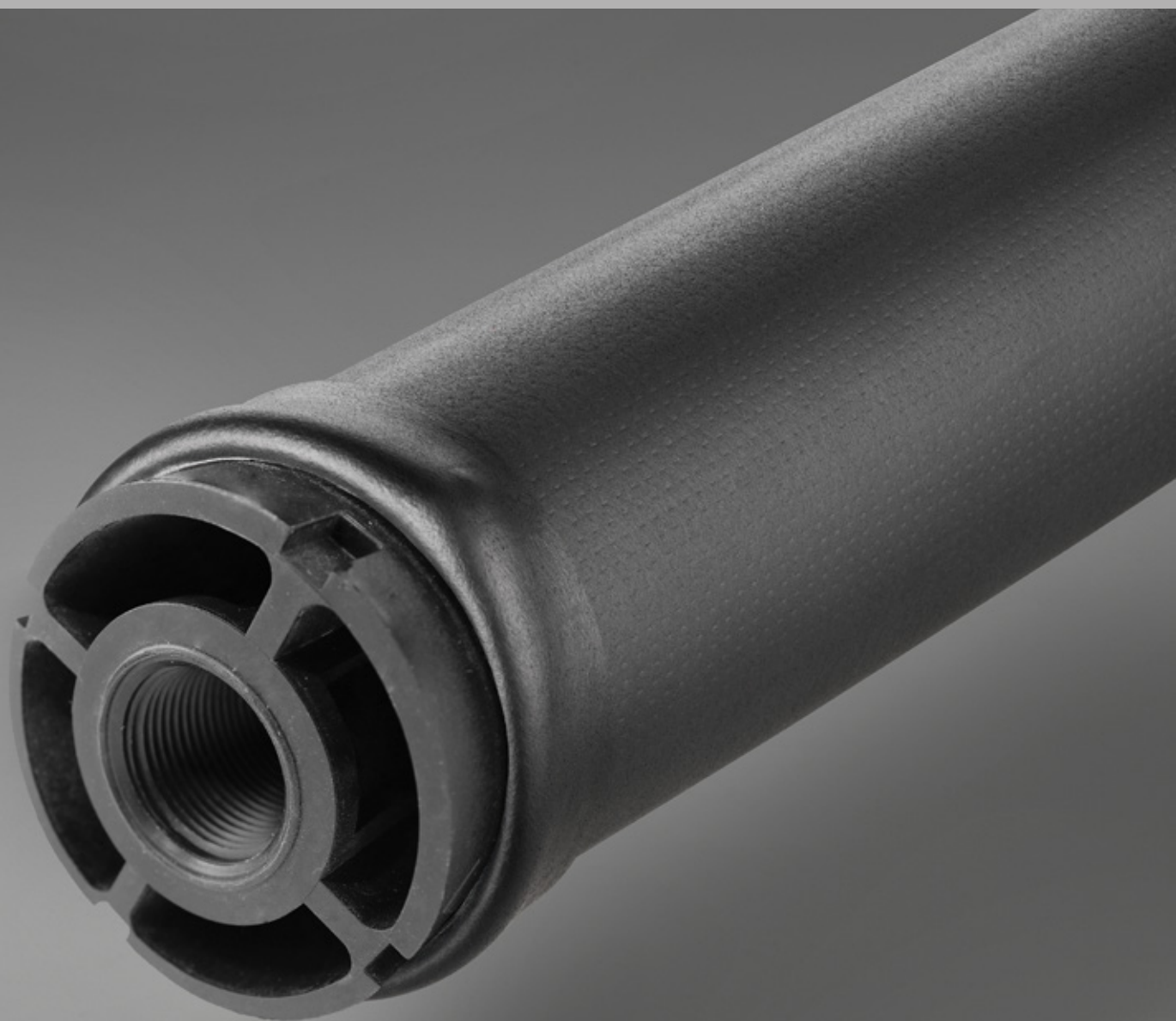


JetFlex® Hybrid-Diffuser

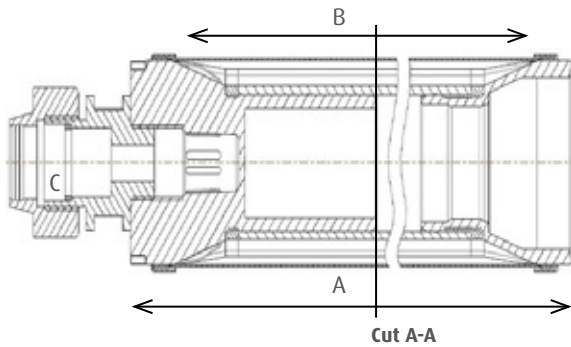


Dimensions

Material	Tube diameter	ID-Sleeve	Wall thickness
EPDM	87 mm	~ 90 mm	1,9 ± 0,2 mm

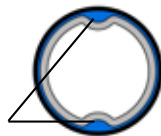


Installation drawing

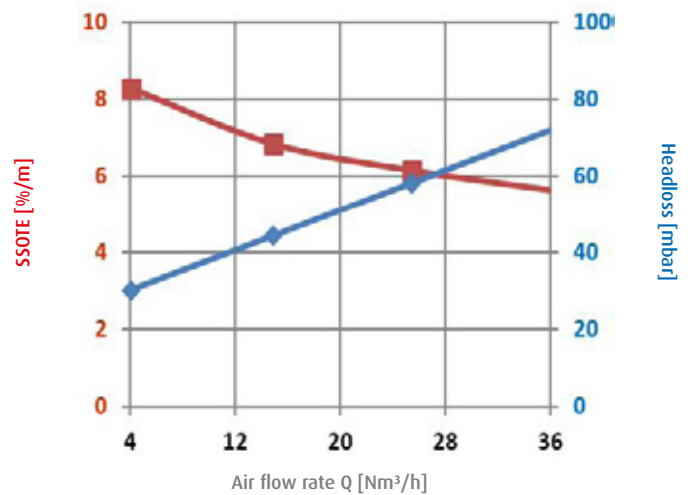


- A = total length
- B = perforated length
- C = compression fitting

Air grooves provide a resistant-free air distribution over the entire length of the diffuser.



SSOTE und Headloss for EPDM



Perforated length [B]	Total length [A]	Perforated area	Air flow rate at standard operating conditions	Max. overload / Maintenance air flow rate	Operating mode
2000 mm	2080 mm	0,46 m ²	6 - 36 Nm ³ /h	56 Nm ³ /h	continuous / intermittent

Dimensions for connection to air distribution pipework

Type	Connection
Direct to round or squared pipe (PVC or Stainless Steel)	Threaded nipple – pipe thread ISO 228-G 1A
PE-Distribution pipework	Compression fitting with external thread - 32mm x 1"

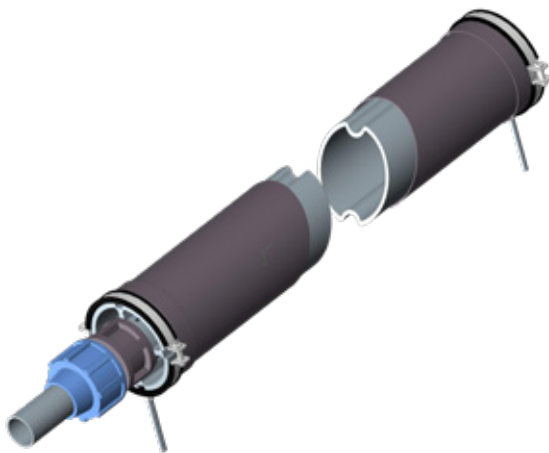
Please see our operation manuals for more details.

Membrane material

Material	Tech. standard	EPDMperformance Plus
Colour		black
Plasticiser (%)		35
Density (g/cm ³)	DIN EN ISO 1183-1	1.11
Tensile strength (N/mm ²)	DIN 53504	>8,5
Elongation at break (%)	DIN 53504	>550
Tear strength (N/mm)	DIN EN ISO 34-1	>10
Hardness (Shore A)	DIN ISO 7619-1	43 ± 5
Operating air temperature (°C)		5 - 80
Operating water temperature (°C)		5 - 40

Other materials

Support tube	SS clamp
PP / PP 20% GF	1.4301



Accessories



Compression fitting



Fixing clamp



Jäger Umwelt-Technik GmbH

Lohweg 1
30559 Hannover
Germany

+49 511 646 440

+49 511 646 444 99

info@jaeger-envirotech.com

www.jaeger-envirotech.com



Disclaimer

We exclude any liability for the information and product presentations provided. Contents of technical character are based on the date of publication. Existing copyrights